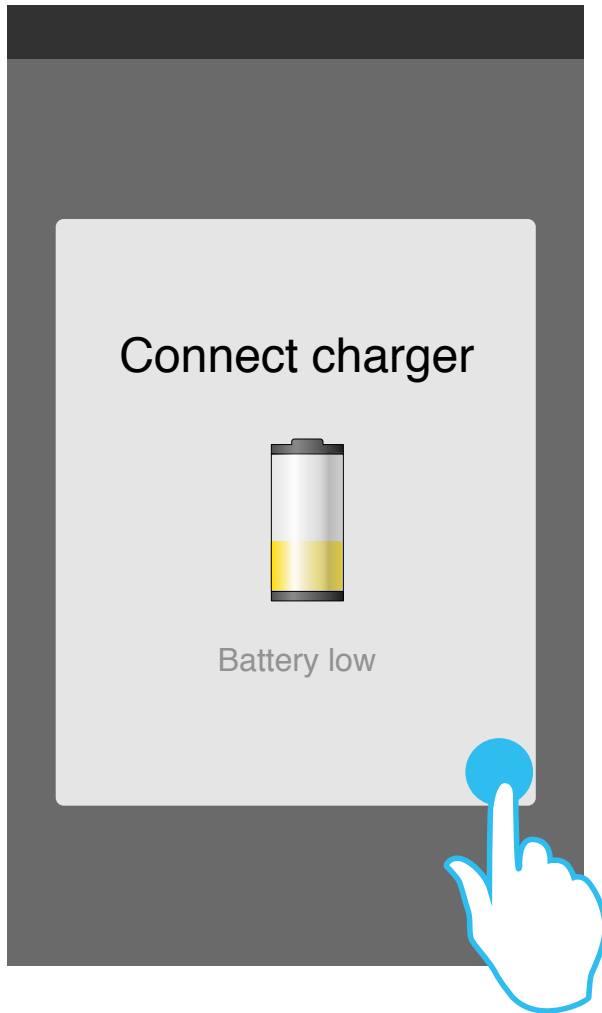


## B2G System Overlay - Battery notification

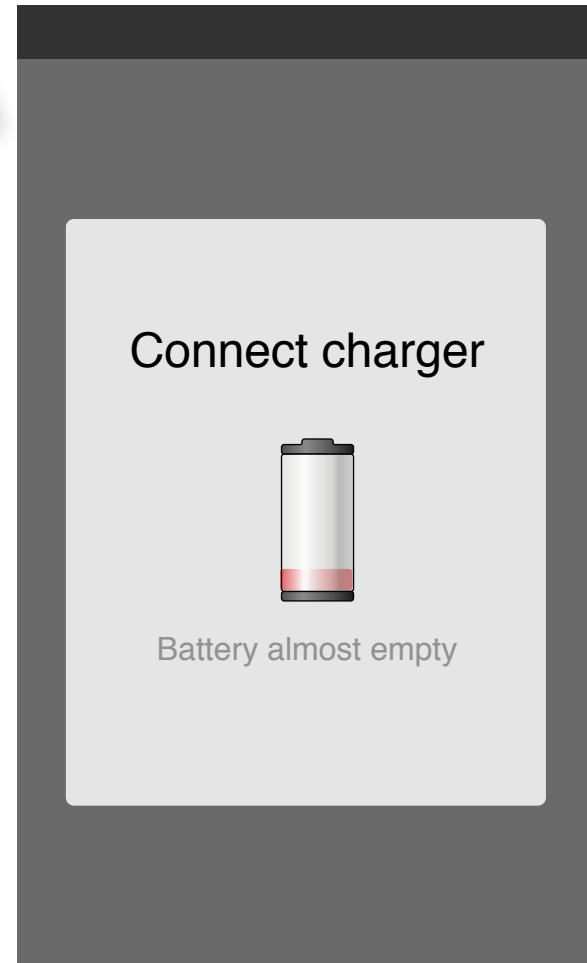
### Variables

1. phone on/ off
2. battery level: low/ almost empty
3. (if phone is on) screen active/ inactive
4. charging/ discharging

## B2G System Overlay - Battery notification Device discharging

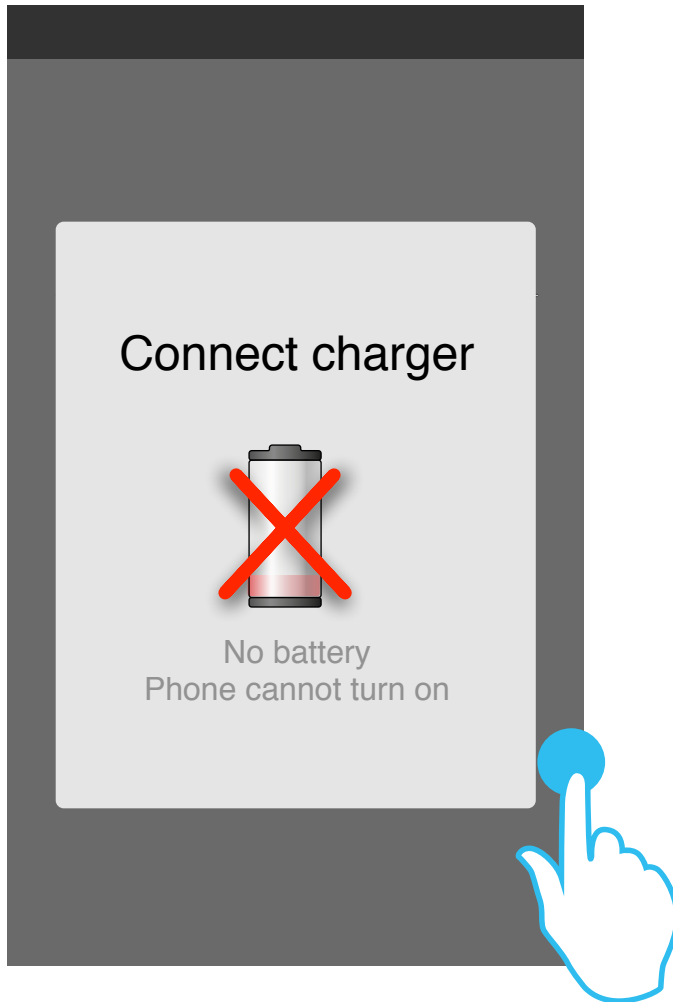


When the device is on, the same notification appears and it disappears when the user touches anywhere outside of the notification.



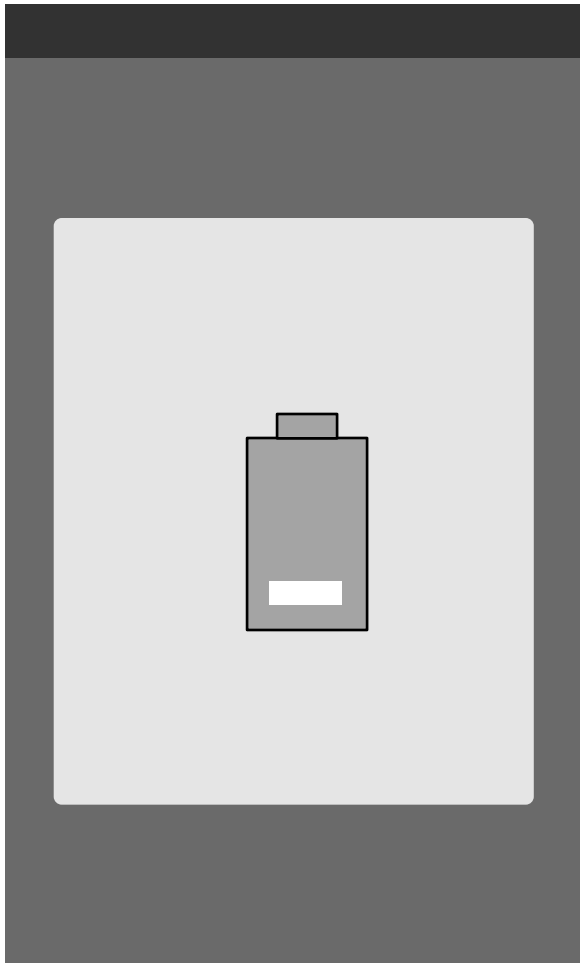
- 1 The device is off and discharging. The system overlay notification appears when the user touches a hardware button or touches anywhere on the screen. The notification automatically disappears after 5 seconds.

- 2 The battery diagram changes as the battery is almost empty. The notification automatically disappears after 5 seconds, and beeps at the same time.

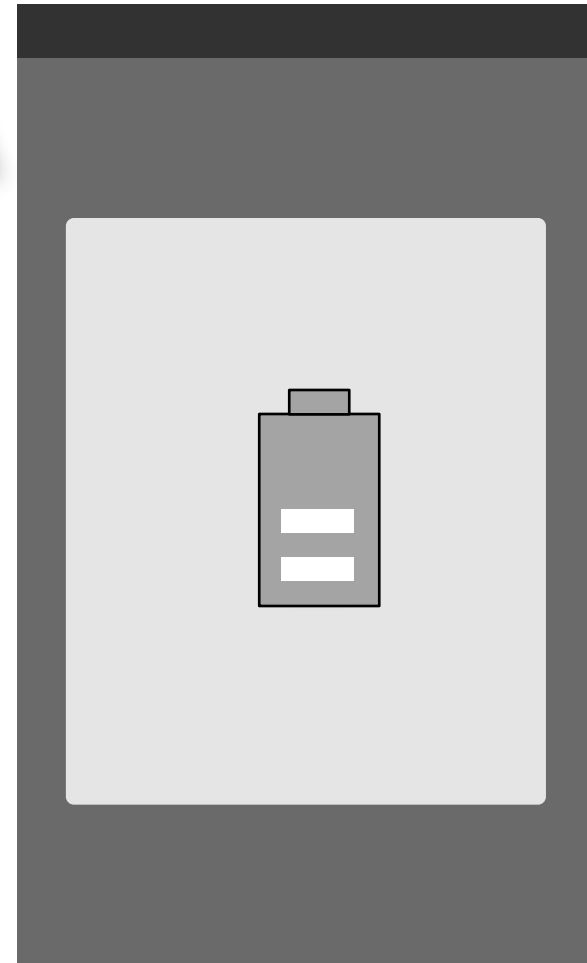


- 3 The device is off and not charging. The system overlay notification appears when the user touches a hardware button or touches anywhere on the screen. The notification automatically disappears after 5 seconds, and beeps at the same time.

## B2G System Overlay - Battery notification Device charging



When the device is on, the same notification appears and it disappears when the user touches anywhere outside of the notification.



1

The device is charging. The system overlay notification appears and nudges at the same time when the user charges the phone.

2

The battery diagram changes to indicate the phone is charging when the notification screen is on. The notification disappears in a few second. It reappears when a user touches a hard button.

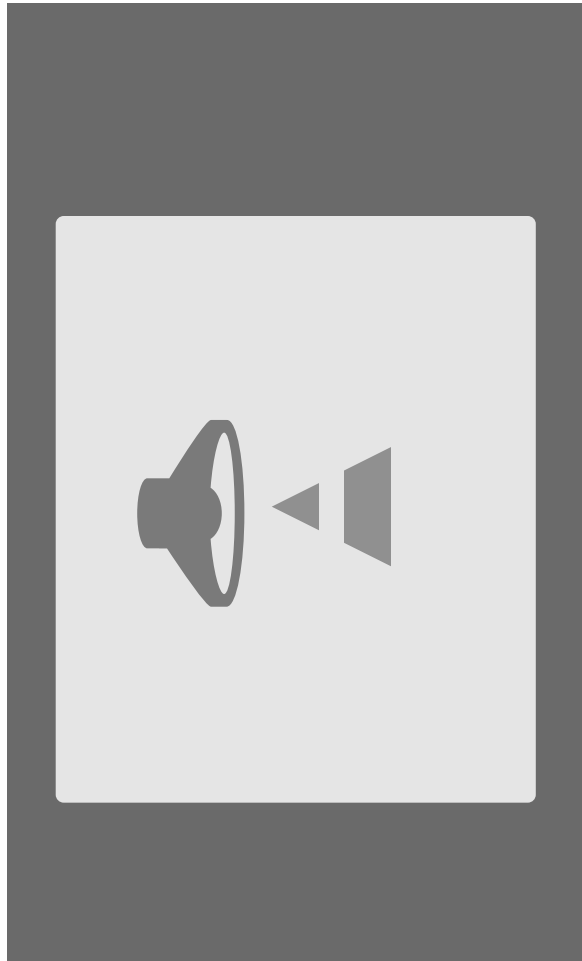
## B2G System Overlay - Volume notification

### Variables

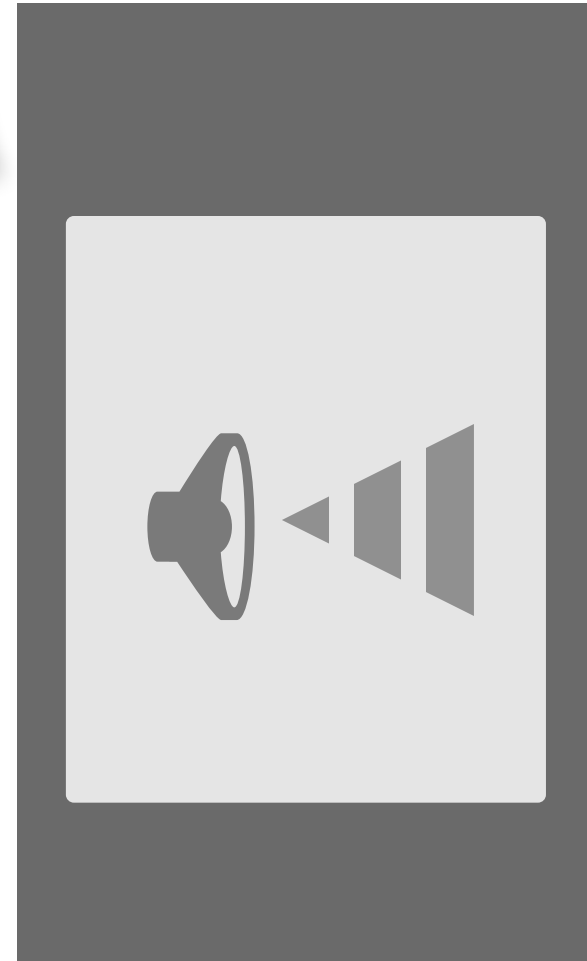
1. Controls: hard button/ headset/ bluetooth + settings\*
2. Sound: Ring/ Media audio/ speakerphone/ normal voice call

\* "settings" is not included in this document

## B2G System Overlay - Volume notification

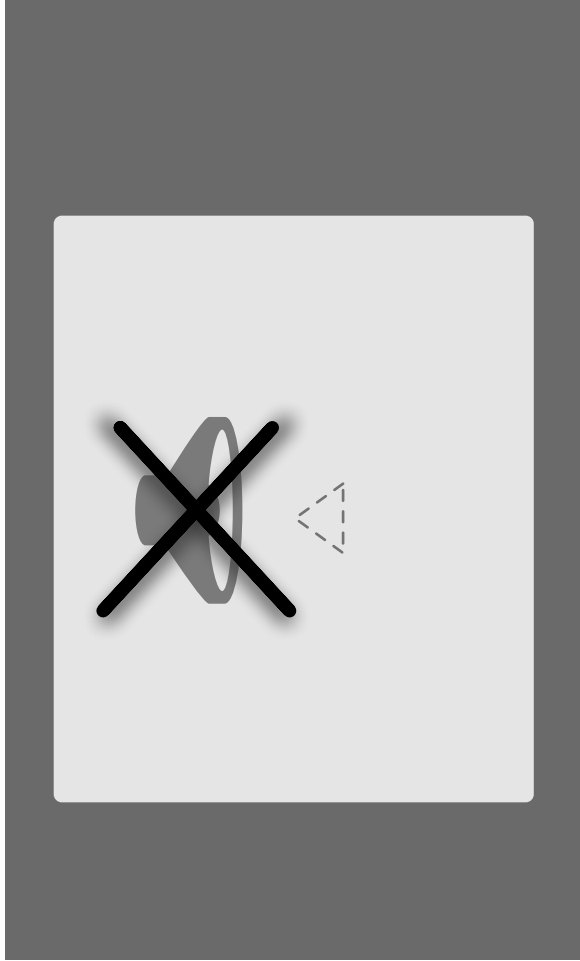


If the user adjusts the control when there is sound i.e. ringtone or media, the playback volume adjusts accordingly.

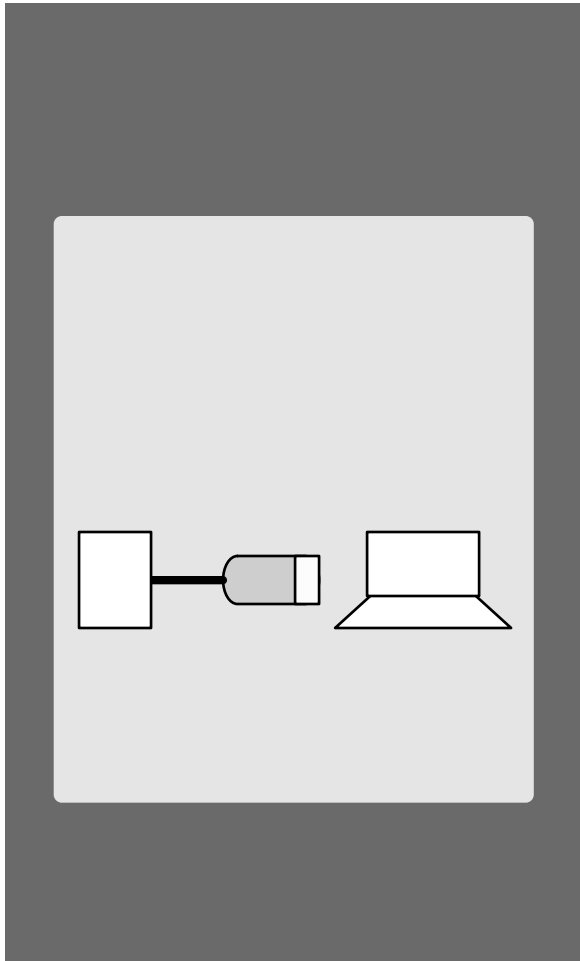


1 The system overlay notification appears when the user touches the volume control hardware button, adjusts the volume with bluetooth, or headset. The notification automatically disappears after 1 second.

2 There icon's increments correspond to the actual volume changes (i.e. 10 increments if there are 10 volume levels)



3 Volume muted



Some icon to indicate the phone is connected to the computer

- 1 The system overlay notification appears when the user connects the phone with a USB cable. The notification automatically disappears after 1 second and the phone nudges at the same time.