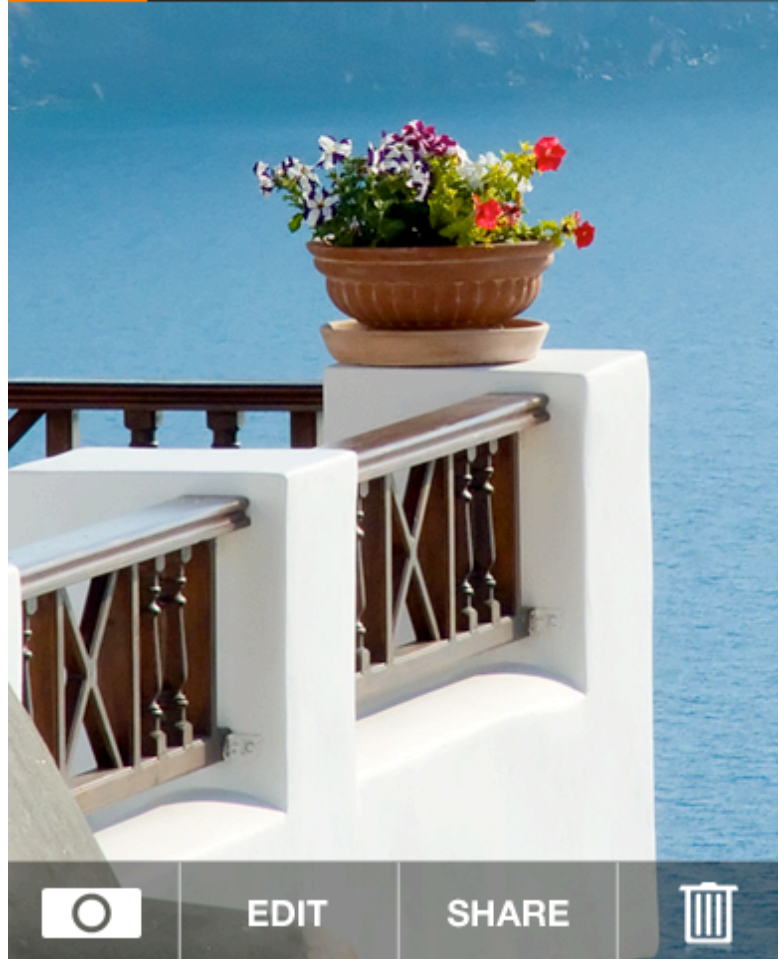


Tap photo from filmstrip to select
Videos have a play button indicator



Shortcut to full gallery

This is the view you see when reviewing a photo from the camera, and when you tap a photo from the gallery



Pinch to zoom

Double tap to toggle zoom 100% and fit to screen

Swipe left and right for previous and next photo

Tap camera to open the camera

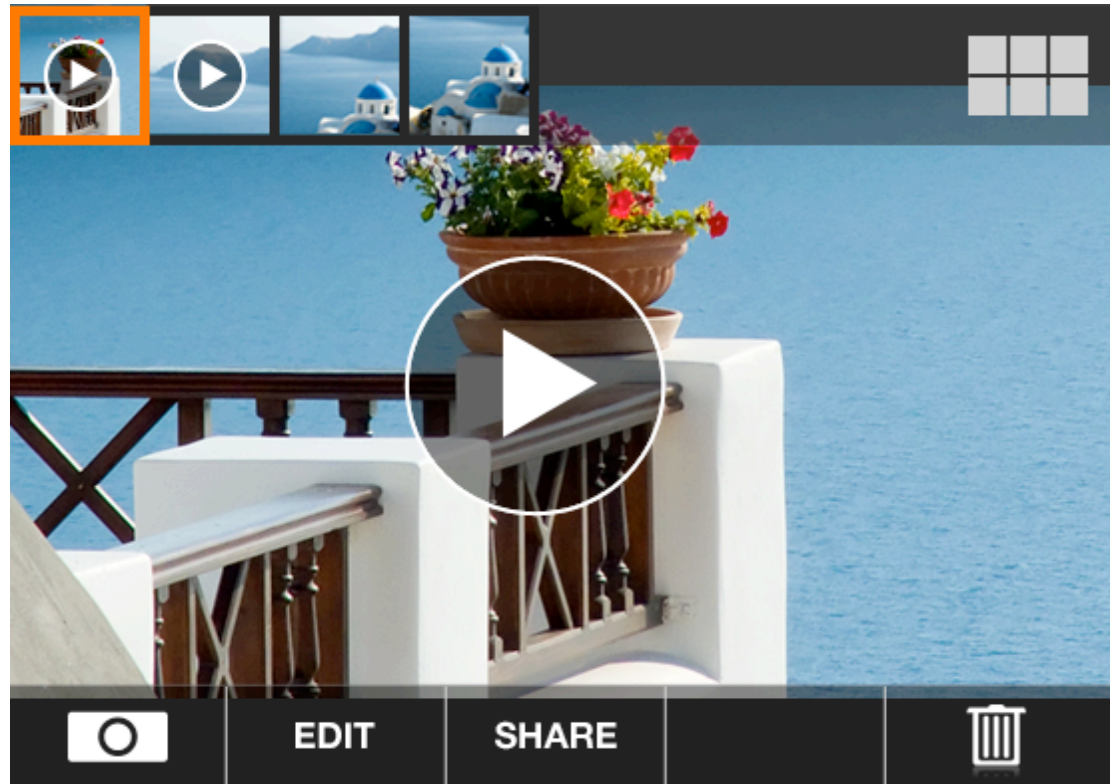


EDIT

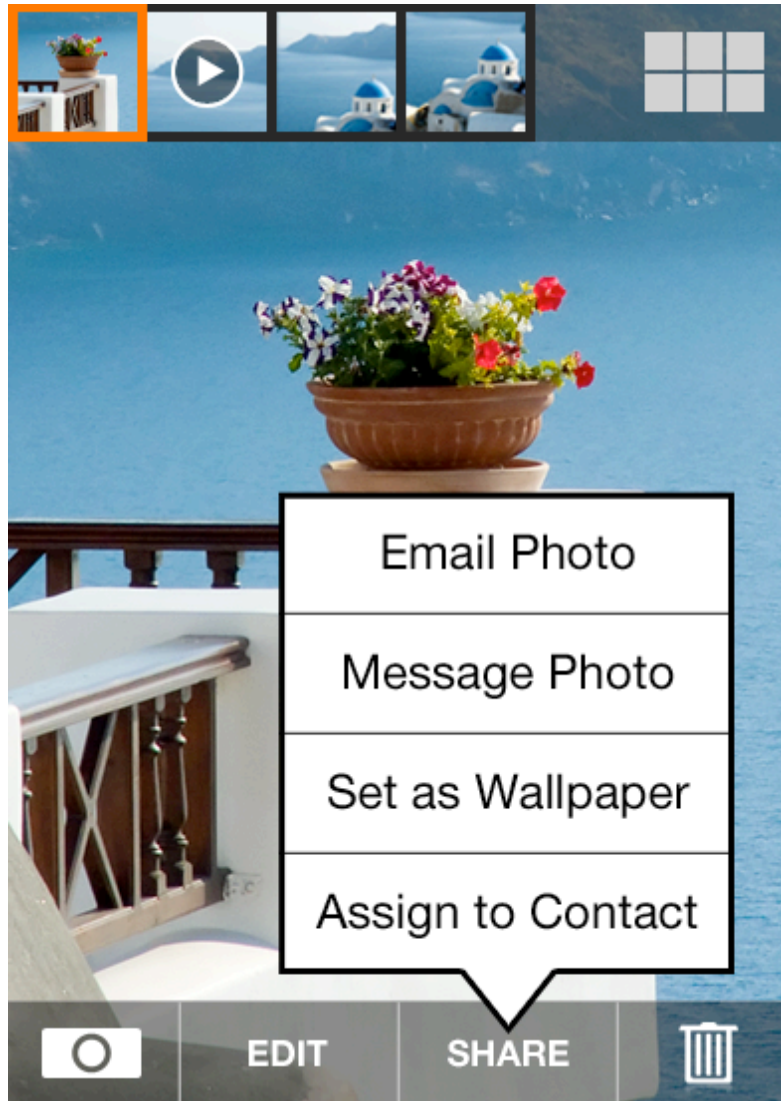
SHARE



VIEW VIDEO / LANDSCAPE ORIENTATION



SHARE SINGLE PHOTO



Tap [Share] to show pop up menu, tap again, or anywhere else, to cancel menu.

Tap any photo to view

Swipe up and down to scroll

Tap Camera to open camera

Tap Play button to start slideshow
from the photo at the top left



Tap Select for multi-select mode

BROWSE PHOTOS with DATE SCROLLBAR (CONCEPT ONLY)

To assist with scrolling very large photo galleries, when swiping up and down, show a scrollbar that indicates what months photos were taken.

The orange region represents the current view.



SELECT MULTIPLE PHOTOS



Delete and Share should be in a disabled state until at least one photo is selected

Tap Cancel to return to browsing photos

SHARE MULTIPLE PHOTOS



Tap photo to add to selection, tap again to unselect

Tap Delete to delete selection, show confirmation prompt.

Tap Share to show menu to email or message selected photos.

Tap photo to show toolbars again

Show black bar letterbox when necessary depending on aspect ratio of display and photo/video



Pinch to zoom

Double tap to toggle zoom 100% and fit to screen

Swipe left and right for previous and next photo



Slider to adjust up +3 to -3 stops.

This should retain photo contrast while shifting the mid tonal values brighter or darker.

Should “snap” on 0 to make it easy to reset exposure

Drag handles to crop
Photo resizes when you let go



Pinch to zoom

If you've cropped in too much,
then zoom out to resize the photo
again

Pan photo to reposition

P2 Select aspect ratio lock,
default is Freeform
Tap to unselect all to
choose no cropping



Select effect

See a small preview thumbnail of the effect on the buttons

Tap again to unselect all for no effect

EDIT - BORDERS

CANCEL EDIT SAVE



Select border style
Tap again to unselect all to choose no border

White Black Rough P2 Rounded P2

EXPOSURE CROP EFFECTS BORDERS

